

NEWLY REFURBISHED APARTMENTS TO RENT



HAMLET GARDENS

RAVENS COURT PARK • W6

HAMLET GARDENS

RAVENS COURT PARK • W6 0TP

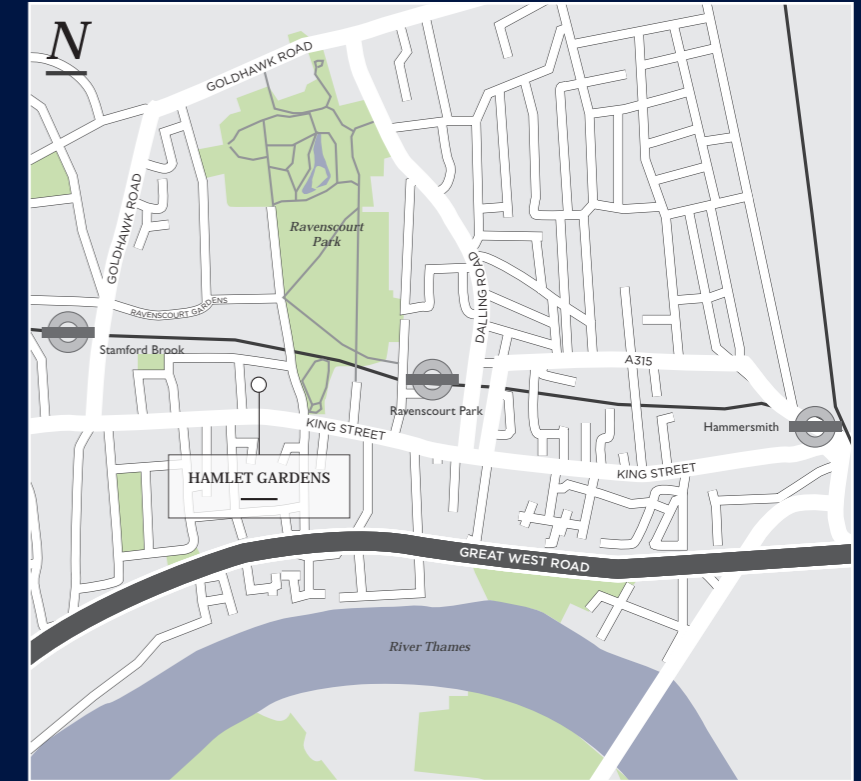
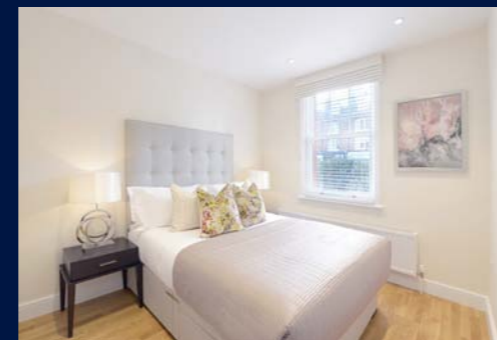
- 1, 2 & 3 bed luxury apartments to rent
- From: £450 per week
- On-site CCTV
- Stunning park views
- Lift service
- Key entry phone
- Secure gated entrance
- Dedicated on-site building manager
- 24 hour maintenance service
- Flexible rental terms
- Available furnished or unfurnished

Description

Hamlet Gardens, next to Ravenscourt Park is a profoundly sought after location, set within the Westcroft Square conservation area, moments away from Ravenscourt Park tube. The actual building is a beautifully and sympathetically restored red brick Victorian mansion block retaining many of its original period features, consisting of 1, 2 and 3 bedroom luxury apartments, some with stunning park views.

Location

Hamlet Gardens is just a short stroll from Ravenscourt Park and the hustle and bustle of Chiswick High Road. The apartments enjoy access to many of the nearby bistros, shops, cafés and quiet parks of W6. For those summer strolls The Thames path is also close by. Here you will find the River Café and one of the many sailing clubs which you can indulge in some more vigorous activity.



Local Transport

There is a wide selection of local transport facilities, including a number of trains and buses for commuting to the West End or City. Trains available include, Ravenscourt Park (District Line), Stamford Brook (District Line), Turnham Green (District & Piccadilly Line) and Hammersmith Station (Circle line, Hammersmith and City and Piccadilly Line).

About the Managing Company

The Managing company is a responsible and has a portfolio of over 1200 apartments and houses to rent in the best postcodes across London. We employ an in-house team of lettings agents, building surveyors, property managers and maintenance experts. We provide our tenants with a 24-hour helpline and on-site staff to answer questions during office hours.



AGENTS NOTES (May, 2020)

EXAMPLE OF AVAILABILITY :

2 Bedroom Properties:

32 - 630 sq ft £755 per week

10 - 788 sq ft £775 per week

53 - 846 sq ft £835 per week

2 Bedroom Properties:

11 - 1st floor - 987sq ft - 2 baths £1,000 per week

25 - Ground floor - 1010sq ft - 2 baths £1,100 per week

123 - Ground floor -1023sq ft - 3 bathrs £1,150 per week

Hamlet Gardens comprises beautiful and sympathetically restored red brick Victorian mansion blocks that contain luxury apartments of varying sizes - 1, 2 and 3 bedrooms, some benefiting from park views.

All the apartments have recently been refurbished and are available to rent on flexible terms.

Each individual block has it's own security as well as an on-site building manager.

Contact : Tel: +44 (0)20 3411 0979